

2002-2009 GM Rear Air Spring installation Guide

Air Spring Removal



WARNING: The air suspension system is under pressure (up to 10 bar, or 150 lbf/in²). Do not allow dirt or grease to enter the system. Always wear standard protective hand, ear, and eye protection when servicing the air suspension system.

Removal

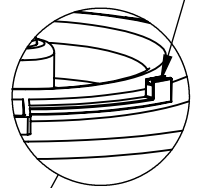
1. Raise the vehicle on a hoist or with the proper lifting equipment. Suspension must be at full rebound with no load.



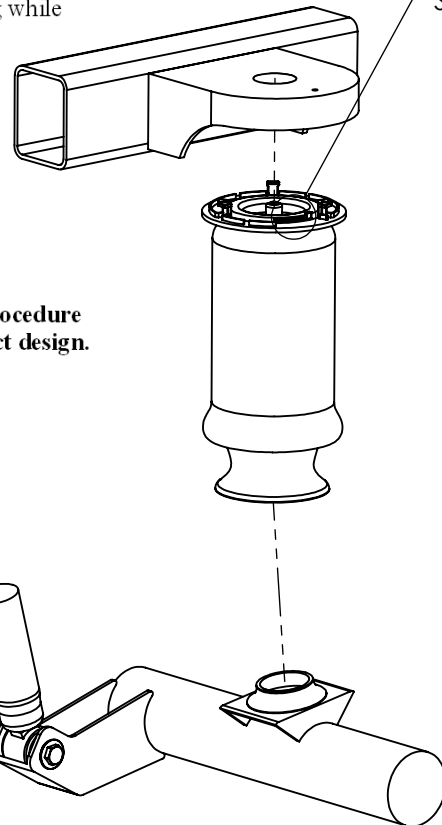
WARNING: Always support the chassis on safety stands. Refer to your vehicle's Owner's Manual for correct lifting instructions.

2. Remove both rear tires.
3. Locate the air compressor behind the right rear wheel.
4. Remove the two lower mounting bolts from the compressor mounting plate. Lift upward on the compressor assembly and unhook the unit from the frame rail.
5. Deflate both rear air springs, by disconnecting the air lines leading from the compressor assembly to the rear air springs.
6. Rotate the rear air springs and pull downward to remove them from the axle. The air springs are held from turning with a plastic clip on top of the air spring. You may have to hold the plastic clip down while rotating the air spring to free it from the upper spring seat.
7. Disconnect the air line from the air springs by pressing down on the steel fitting while pulling outward on the air line.
8. Carefully remove air spring from the vehicle.
9. Seal off hose to prevent dirt or grease from entering system.

LOCKING FINGER



DETAIL A
SCALE 1 : 2



Air Spring Installation

1. Reverse steps 9-1 for installation.

NOTE: Make sure to follow the air fitting installation guide for correct the procedure of the new VOSS air fittings. These are different from the O.E. push-to-connect design.



WARNING: Make sure to tighten all wheel hub bolt nuts to 115-142 Nm



PROPRIETARY AND CONFIDENTIAL

THE INFORMATION CONTAINED IN THIS DRAWING IS THE SOLE PROPERTY OF ARNOTT, INC. ANY REPRODUCTION IN PART OR AS A WHOLE WITHOUT THE WRITTEN PERMISSION OF ARNOTT, INC. IS PROHIBITED.

DIMENSIONS ARE IN INCHES
TOLERANCES:
FRACTIONAL ±
ANGULAR: MACH ± BEND ±
TWO PLACE DECIMAL ±
THREE PLACE DECIMAL ±

MATERIAL

FINISH

NEXT ASSY USED ON

APPLICATION

DO NOT SCALE DRAWING

	NAME	DATE
DRAWN	KMD	07/30/09
CHECKED		
ENG APPR.		
MFG APPR.		
Q.A.		
COMMENTS:		

A-2238
'02-'09 BRAVADA / ENVOY /
RAINIER / TRAILBLAZER

SIZE A	DWG. NO. AIR-CONVERSION	REV. 0
SCALE: 1:8	WEIGHT:	SHEET 1 OF 1